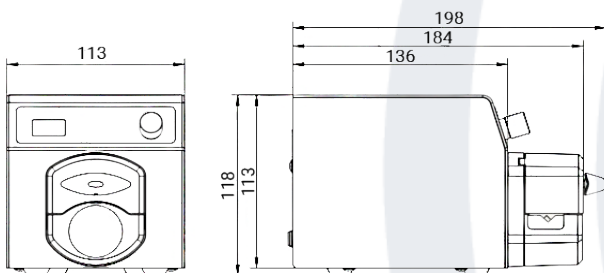




Product Introduction

- 304 stainless steel shell, anti-corrosion, resistant to rust conform to GPM request.
- OLED screen display motor speed and working status, digital knob control speed.
- HF-SK-HandyPump external control adopts standard wiring terminal, which is more suitable for supporting industrial use.
- Support RS232, RS485 communication, Modbus protocol, more convenient to connect with PLC.
- With power-down memory function, cost effective.
- The external control function interface is rich, and the external control isolation signal is 5-24V.
- Compact structure, can be stacked.

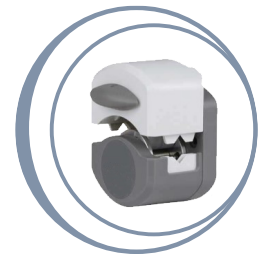
Dimension Drawing (Unit: mm)



Pump head



HF-HandyPump01



HF-HandyPump02

Technical Specifications

| | | | |
|-------------------|--|-------------------------|--|
| Flow rate range | 0,0033~365,69 ml/min | Power supply | DC24V/1A with power adapter |
| Speed range | 0,1~300 rpm | External control | Start/stop control(switch signal) |
| Speed resolution | 0,1 rpm | | Speed: 0-5V, 4-20mA (standard), 0-10V (optional) |
| Control method | Digital knob control/Mechanical keypad | Communication interface | RS485, RS232 |
| Motor type | Stepper motor | Condition temperature | 0-40 °C |
| Display | Pantalla OLED (0,96") | Relative humidity | < 80 % |
| Power consumption | 15W | Output interface | Output motor working status |
| Weight | 1,75 kg | IP rate | IP31 |
| Keypad lifetime | 300.000 times | Drive dimension | 198*113*118mm (L*W*H) |

- Product Composition and Flow Rate Range

| Model | Pump Head | Speed (rpm) | Tubing Size | Flow Rate Range (ml/min) |
|-----------------|----------------|-------------|-------------------------|--------------------------|
| HF-SK-HandyPump | HF-HandyPump01 | 0,1-300 | 13#, 14#, 19#, 16#, 25# | 0,0033-365,69 |
| | HF-HandyPump02 | 0,1-300 | 13#, 14#, 19#, 16# | 0,0033-190,76 |